

Plot Time: Apr 15, 2021 - 11:20am
Drawing Name: \\wzmh\Projects\7432\7432.001\6_Drawings\10_Drawings-Design\30-00\VA-400-401 BUILDING ELEVATION.dwg



MATERIAL LEGEND			
1	GLASS IN WINDOW WALL SYSTEM	8	MASONRY CLADDING
3	BALCONY GLASS & ALUMINUM RAILING	9	TYPE A ALUMINUM PANEL
4	TYPE A ALUMINUM FRAME & SLAB COVER	10	TYPE B ALUMINUM PANEL
5	TYPE B ALUMINUM FRAME & SLAB COVER	12	STOREFRONT GLAZING
6	METAL CANOPY	13	ARCHITECT'S SIGNAGE
7	SIGNAGE	14	PLANTERS, REFER TO LANDSCAPE DRAWINGS

----- LINE OF BUILDING OUTLINE AT MIDDLE OF SITE FROM REZONING APPLICATION - FEB 09 2018

NOTE: 85% GLAZING TO BE BIRD FRIENDLY

ISSUES/REVISIONS			ISSUES/REVISIONS		
ISSUE	TITLE	DATE	ISSUE	TITLE	DATE
A	ISSUED FOR CONSULTANT COORDINATION	2019NOV28			
A	ISSUED FOR SPA AND REZONING RESUBMISSION	2019DEC12			
A1	ISSUED FOR CONSULTANT COORDINATION	2020AUG12			
A1	REISSUED FOR SPA	2020AUG11			
A1	REISSUED FOR SPA - DRAFT	2021FEB05			
A2	ISSUED FOR COORDINATION COORDINATION	2021APR01			
A2	REISSUED FOR SPA	2021OCT19			

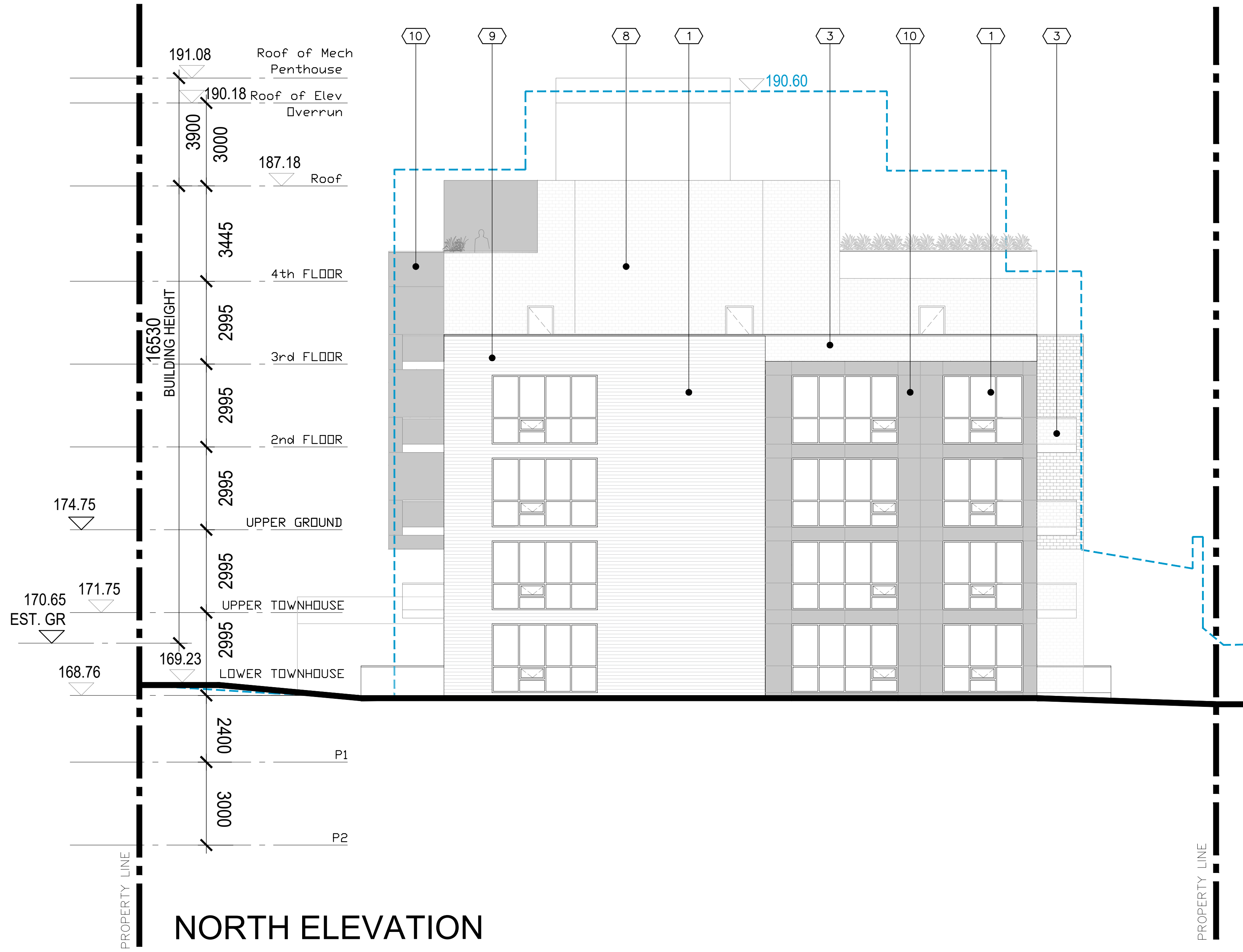
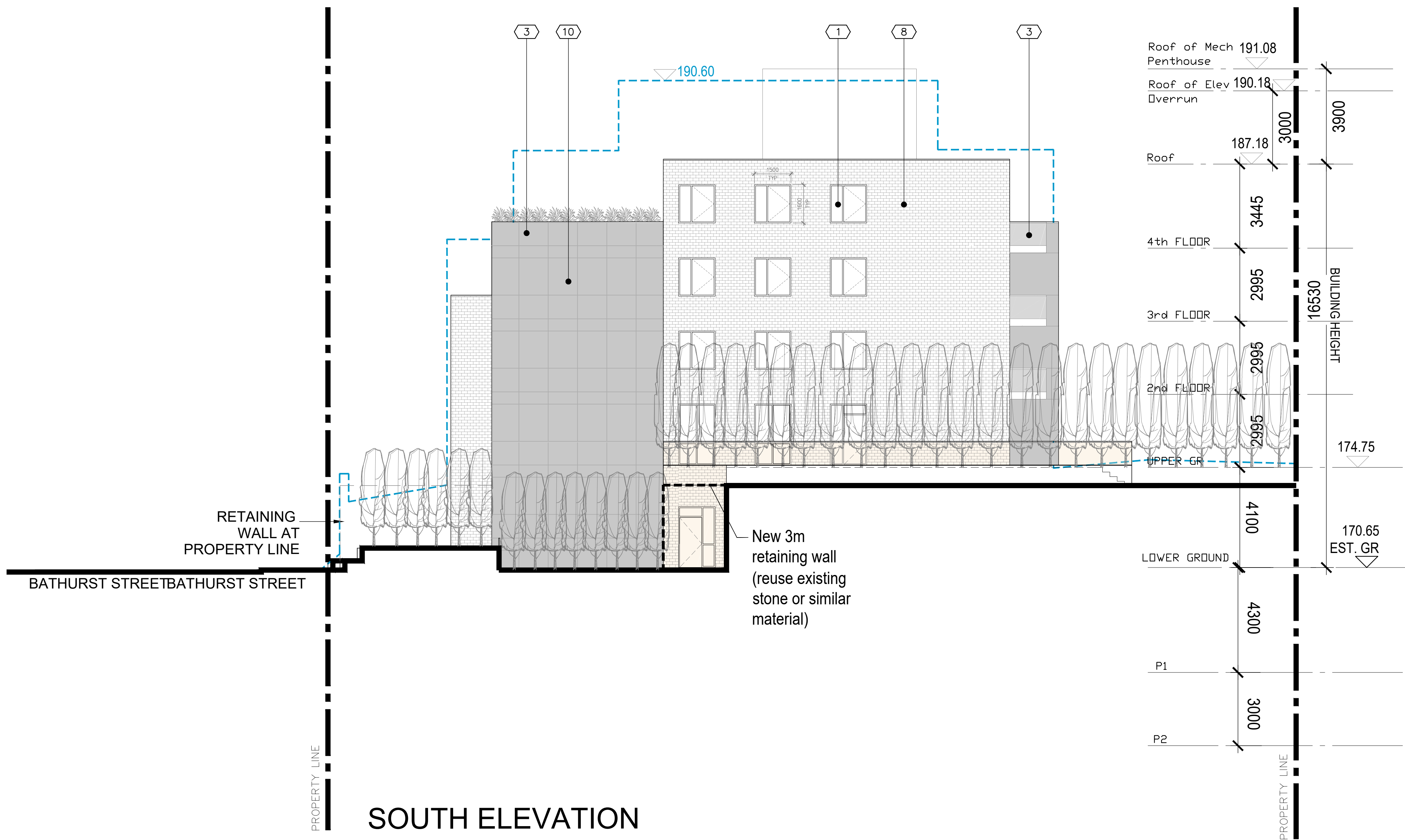
Project North	Seal
<small>CHECK, VERIFY AND REPORT ANY DISCREPANCIES TO THE CONSULTANT WHOSE SEAL IS APPLIED TO THIS DRAWING. THIS DRAWING IS NOT TO BE USED FOR THE PURPOSE OF CONSTRUCTION. THIS DRAWING SHALL NOT BE USED FOR CONSTRUCTION PURPOSES UNTIL ISSUED AND CANCELLED BY THE OFFICE OF THE PROJECT MANAGER.</small>	

Starlight Investments

WZMH Architects
95 St. Clair Ave. W., Suite 1500
Toronto, Ontario, Canada M5V 1H6
Tel: 416-961-4111
www.wzmh.com

1637 Bathurst Toronto, Ontario		Date	DEC 12 2019
Drawing Title		Scale	1:100
ELEVATIONS		Drawn By	
		Check By	
		Project No.	07432.000
		Drawing No.	A400

Plot Time: Apr 15, 2021 - 10:59am
Drawing Name: \\warmh\Projects\7432\001\6_Drawings\VO_Drawings-Design (3D-DD)\A-400-401 BUILDING ELEVATION.dwg



MATERIAL LEGEND

- 1 GLASS IN WINDOW WALL SYSTEM
- 3 BALCONY GLASS & ALUMINUM RAILING
- 8 MASONRY CLADDING
- 9 TYPE A ALUMINUM PANEL
- 10 TYPE B ALUMINUM PANEL

----- LINE OF BUILDING OUTLINE AT MIDDLE OF SITE FROM REZONING APPLICATION - FEB 09 2018

NOTE: 85% GLAZING TO BE BIRD FRIENDLY

ISSUES/REVISIONS			ISSUES/REVISIONS		
ISSUE	TITLE	DATE	ISSUE	TITLE	DATE
A	ISSUED FOR CONSULTANT COORDINATION	2019NOV08			
A	ISSUED FOR SPA AND REZONING RESUBMISSION	2019DEC12			
A1	ISSUED FOR CONSULTANT COORDINATION	2020AUG12			
A1	REISSUED FOR SPA	2020AUG01			
A2	REISSUED FOR SPA - DRAFT	2021FEB06			
A2	ISSUED FOR COORDINATION COORDINATION	2021APR01			
A2	REISSUED FOR SPA	2021OCT29			

Project North

Seal

ONTOARIO ASSOCIATION OF ARCHITECTS

20210416

DATE

CHECK, VERIFY AND REPORT ANY DISCREPANCIES TO THE CONSULTANT WHOSE SEAL IS APPLIED TO THIS DRAWING. THIS DRAWING SHALL NOT BE USED FOR THE PURPOSE OF OBTAINING A CONSTRUCTION PERMIT OR FOR CONSTRUCTION PURPOSES UNTIL ISSUED AND NOTED IN THE SPACE ABOVE BY THE NAMED CONSULTANT.

Starlight Investments

WZMH Architects

85 St. Clair Ave W., Suite 1500
Toronto, Ontario, Canada M5V 1H6
Tel: 416-961-4111
www.wzmh.com

1637 Bathurst
Toronto, Ontario

Drawing Title

ELEVATIONS

Project No.

07432.000

Date

DEC 12 2019

Scale

1:100

Checked By

Drawn By

Project No.

07432.000

Drawing No.

A401



MATERIAL LEGEND

- 1 BIRD FRIENDLY GLASS IN WINDOW WALL SYSTEM
- 2 SPANDREL IN WINDOW WALL SYSTEM
- 3 BALCONY GLASS & ALUMINUM RAILING
- 4 TYPE A ALUMINUM FRAME & SLAB COVER
- 5 TYPE B ALUMINUM FRAME & SLAB COVER
- 6 METAL CANOPY
- 7 SIGNAGE
- 8 MASONRY CLADDING
- 9 TYPE A ALUMINUM PANEL
- 10 TYPE B ALUMINUM PANEL
- 11
- 12 RESERVED
- 13 RESERVED
- 14 RESERVED
- 16 RESERVED
- 17 RESERVED
- 18 RESERVED

2 EAST ELEVATION

1:50



1 WEST ELEVATION

1:50

ISSUES/REVISIONS			ISSUES/REVISIONS		
ISSUE	TITLE	DATE	ISSUE	TITLE	DATE
A	ISSUED FOR CONSULTANT COORDINATION	2019NOV28			
A	ISSUED FOR SPA AND REZONING RESUBMISSION	2019DEC12			
A1	ISSUED FOR CONSULTANT COORDINATION	2020AUG12			
A1	REISSUED FOR SPA	2020AUG11			
A1	REISSUED FOR SPA - DRAFT	2021FEB06			
A2	ISSUED FOR COORDINATION COORDINATION	2021APR01			
A2	REISSUED FOR SPA	2021OCT29			

Project North

Seal

ONARIO ASSOCIATION OF ARCHITECTS

LEONARD J. MULLIN

2021/04/16

DATE

CHECK, VERIFY AND REPORT ANY DISCREPANCIES TO THE CONSULTANT WHOSE SEAL IS APPLIED TO THIS DRAWING. THE DRAWING SHALL NOT BE SUBMITTED TO THE BOARD OF ARCHITECTS WITHOUT THE SIGNATURE OF THE CONSULTANT WHOSE SEAL IS APPLIED TO THIS DRAWING.

Starlight Investments

WZMH

WZMH Architects
95 St. Clair Ave. W., Suite 1500
Toronto, Ontario, Canada M6K 1P6
Tel: 416-961-4111
www.wzmh.com

1637 Bathurst
Toronto, Ontario

Drawing Title
1:50 PARTIAL
EAST & WEST ELEVATION

Date DEC 12 2019

Scale 1:50

Checked By

Drawn By

Project No. 07432.000

Drawing No. A-402