

Existing Tree Schedule

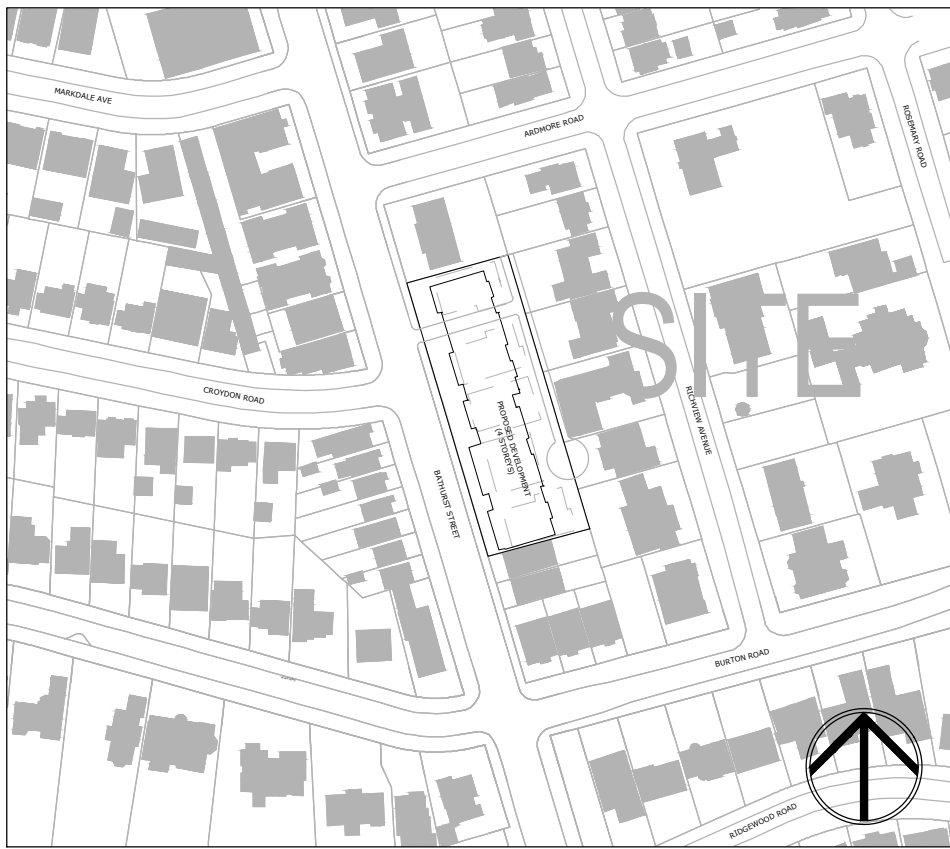
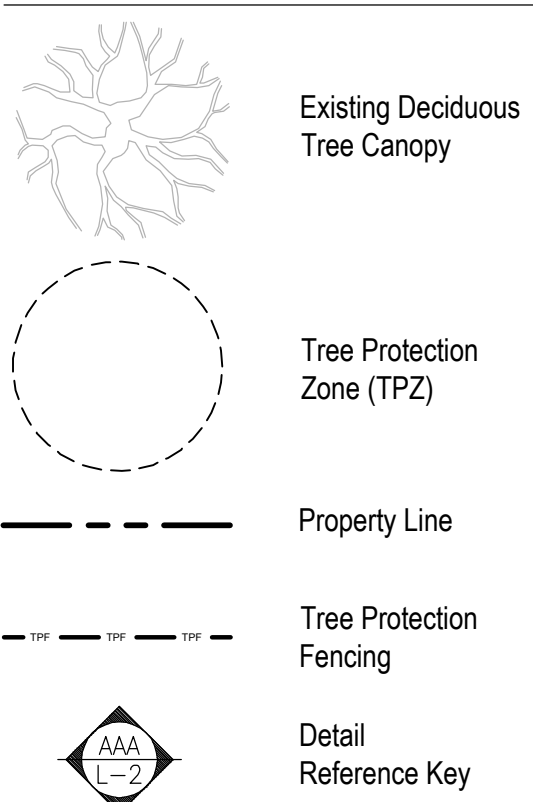
Table #1. Tree number (No.), species, diameter at breast height (DBH), comments, Condition Rating (CR) and Tree Category.

No.	Tree Species	DBH (cm)	Location	CR (%)	TC	Recommendation
#1	Norway maple	33	Neighbour	65	2	To be Preserved
#2	Norway maple	17	Neighbour	60	2	To be Preserved
#3	red elm	52	Neighbour	65	2	To be Preserved
#4	red elm	15	Neighbour	65	2	To be Preserved
#5	basswood	26	Neighbour	70	2	To be Preserved
#6	Norway maple	16	Onsite	70	1	To be Removed
#7	buckthorn	8-12	Onsite	60	1	To be Removed
#8	Norway maple	36	Onsite	65	1	Remove: Conflict with Proposed Development
#9	Norway maple	42	Onsite	65	1	Remove: Conflict with Proposed Development
#10	green ash	18	Onsite, dead	0	1	To be Removed
#11	white mulberry	26-31	Onsite	70	1	Remove: Conflict with Proposed Development
#12	cherry tree	12-15	Onsite	50	1	To be Removed
#13	red oak	46	Onsite	70	1	Remove: Conflict with Proposed Development
#14	green ash	16	Onsite, dead	0	1	To be Removed
#15	Norway maple	15	Onsite	70	1	To be Removed
#16	basswood	35-56	Onsite	60	1	Remove: Conflict with Proposed Development

No.	Tree Species	DBH (cm)	Location	CR (%)	TC	Recommendation
#17	Norway maple	16	Onsite	50	1	To be Removed
#18	Norway maple	38	Onsite	65	1	To be Preserved
#19	black locust	35	Onsite	70	1	To be Preserved
#20	black locust	58	Onsite	60	1	To be Preserved
#21	black locust	30	Onsite	60	1	To be Preserved
#22	Siberian elm	32	Onsite	65	1	Remove: Conflict with Proposed Development
#23	Chinese elm	14	Onsite	55	1	To be Removed
#24	Chinese elm	12	Onsite	60	1	To be Removed
#25	black locust	62	Onsite	55	1	To be Preserved
#26	black locust	58	Onsite	60	1	To be Preserved
#27	black locust	64	Onsite	55	1	To be Preserved
#28	black locust	15-16	Onsite	70	1	To be Preserved
#29	basswood	10-14	Onsite	70	1	To be Removed
#30	silver maple	71	Onsite	60	1	Remove: Conflict with Proposed Development
#31	black locust	42	Onsite	55	1	To be Preserved

No.	Tree Species	DBH (cm)	Location	CR (%)	TC	Recommendation
#32	basswood	58-61	Onsite	55	1	Remove: Conflict with Proposed Development
#33	black locust	39	Onsite	60	1	Remove: Conflict with Proposed Development
#34	Norway maple	15	Onsite	70	1	To be Removed
#35	white mulberry	12	Onsite	70	1	To be Removed
#36	linden tree	22-46	Onsite	65	1	Remove: Conflict with Proposed Development
#37	Siberian elm	10-14	Onsite	65	1	To be Removed
#38	Manitoba maple	10-16	Onsite	60	1	To be Removed
#39	Norway maple	27	Onsite	65	1	To be Removed
#40	Siberian elm	17	Onsite	70	1	To be Preserved
#41	Siberian elm	29	Border	65	1-2	To be Preserved
#42	Norway maple	18	Neighbour - roadside	70	5-2	To be Preserved
#43	Norway maple	52	Neighbour	65	2	To be Preserved
#44	Norway maple	59	Neighbour	65	2	To be Preserved

Legend



Key Map



MARTON SMITH LANDSCAPE ARCHITECTS

170 The Donway W Suite 206,
Toronto, Ontario, Canada, M3C 2G3
tel. 416.492.9966 | email: info@msla.ca

Architect:

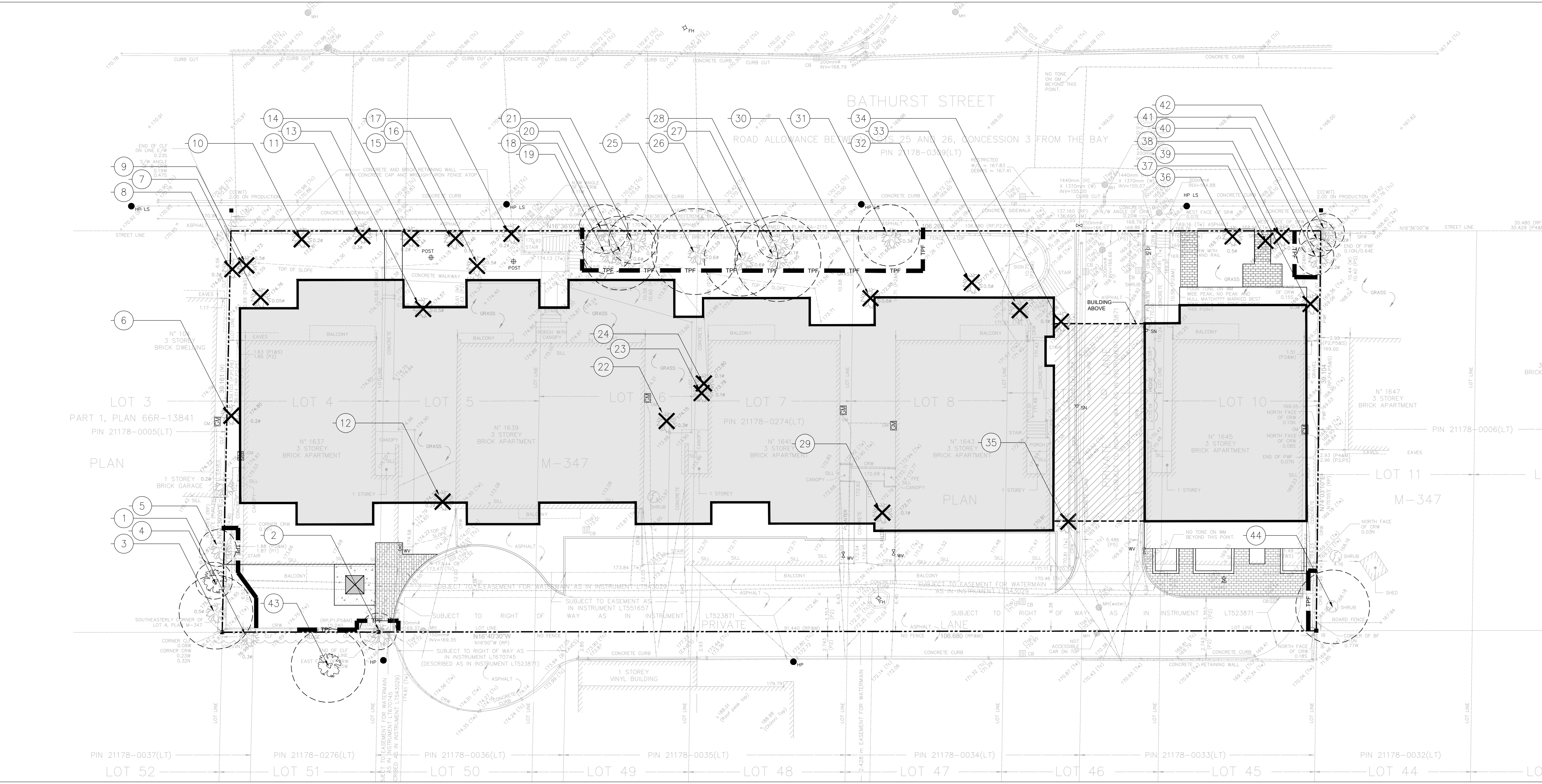


405-317 ADELAIDE STREET WEST
TORONTO CANADA M5V 1P9
+1 416 599 9729
WWW.RAWDESIGN.CA

Client/Owner:



Starlight Investments Ltd.
1801 - 3300 Bloor St West, West Tower,
Toronto, ON M8X 2X2



11 Issued for Submission 02/09/18

10 Revised per Site Plan 01/08/18

09 Revised per Comment 01/04/18

08 Issued for Submission 12/20/17

07 Revised per Grading Plan 11/30/17

06 Revised per Site Plan 11/24/17

05 Revised per Site Plan 11/07/17

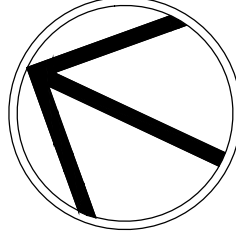
04 Revised per Site Plan 10/31/17


03 Revised per Site Plan 09/22/17

02 Revised per Site Plan 09/13/17

01 Issued for Review 09/01/17

No. Revision Date

North: 

Stamp: 

Project:

Proposed Residential Development

1637-1645 Bathurst

Toronto, Ontario

Scale: 1:200 Date: Sept. 2017

Drawn By: S.L. Checked By: L.M.

Drawing Title:

Tree Removal & Preservation Plan

Project No. 17163

Sheet No. TP1-01

As information contained in these plans shall be checked by the contractor. All discrepancies shall be reported to the Landscape Architect (L.A.) before commencing work. At drawings have copyright and shall remain the property of the Landscape Architect. Copying or any reproduction in part or whole shall only be permitted with written consent of L.A. Drawings shall not be used for construction unless stated & SIGNED. NOTE FOR ANY AND ALL GRADING INFORMATION REFER TO SITE GRADING ENGINEERING DRAWINGS. NO SLOPES ARE TO EXCEED 3:1. PROPERTY LINES AND SETBACKS MUST BE CONFIRMED BY CONTRACTOR PRIOR TO CONSTRUCTION. ANY AND ALL RETAINING WALLS MUST BE APPROVED BY STRUCTURAL ENGINEER PRIOR TO CONSTRUCTION. • PRELIMINARY NOT FOR CONSTRUCTION • THESE DRAWINGS ARE NOT TO BE USED FOR CONSTRUCTION UNTIL COUNTERSIGNED BY L.A. ARCHITECT • SIGNED DATE